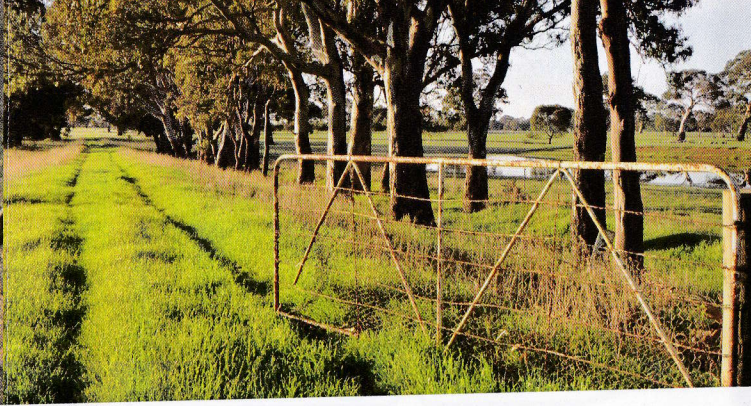




Striped Legless Lizard. Photo supplied by Peter Robertson.



During each committee's three year tenure of office, various projects have been undertaken in the reserve, and it is now possible to **walk or cycle quite comfortably** along some 12 km of the track from Balkins Road west of Hamilton to Nigretta Road near Wannon. The trail passes through farmland with an abundance of sheep in the adjacent paddocks, and therefore **dogs are not permitted anywhere on the reserve**. The lovely rural landscape has much to offer in terms of natural vegetation to enjoy, so **please do not litter**.

The trail is open to walkers and cyclists at any time, but where several **gates** have to be negotiated along the route, these **must be left as they are found**. **Smoking** and the **lighting of fires** is not permitted, and users must be aware that **no fresh water** is available on the track. At certain times of the year, **wasps and meat ants** may be encountered in the reserve.

The present committee is working on plans to make the eastern (Hamilton) end of the track more user friendly, and is involved in the development of a 2 km section leading out of Coleraine. In the longer term, work on the track to the west of Wannon beckons. Ongoing maintenance of the already developed 12 km track does require many hours of light physical labour, and the committee invites members of the community interested in participating in **organised working outings** to contact it at PO Box 294, Hamilton, VIC 3300, or call committee member Larry Walker on 0408 363 061 to register. Volunteers on the committee's data base will then be contacted to join **working bees** where they have the relevant insurance cover whilst working in the reserve.

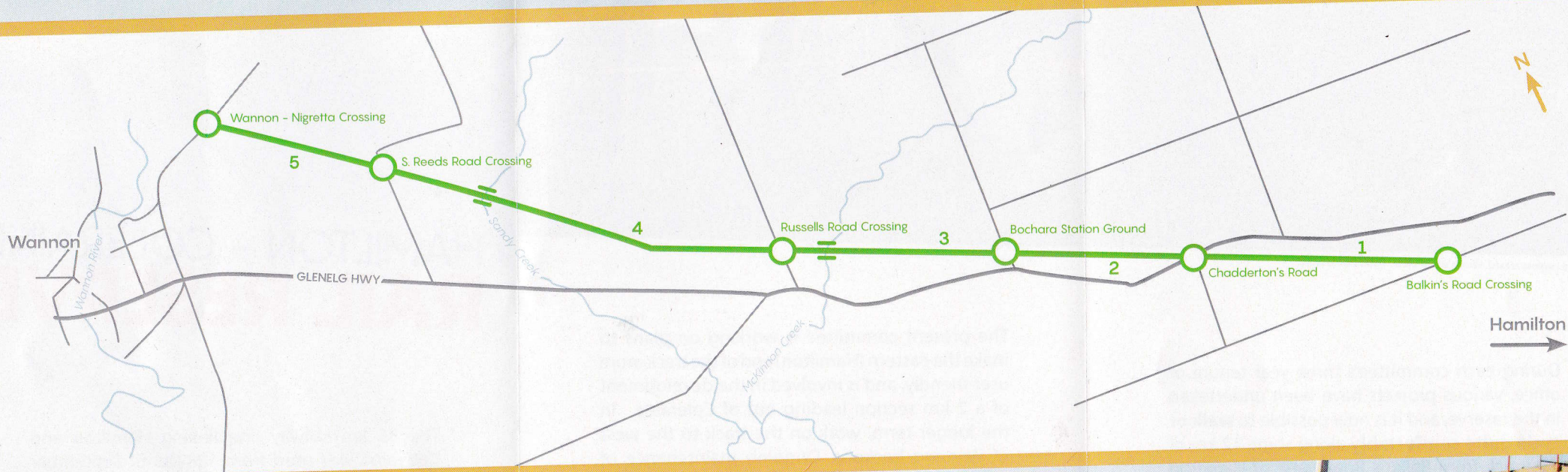


September 2016. Photos supplied by Wendy Radley. Designed and printed by Ivory Print, Hamilton 03 5572 1121

HAMILTON - COLERAINE RAIL RESERVE

The 35 km railway line linking Hamilton and Coleraine was used from 1887 until September 1977. Thereafter the Public Transport Corporation administered the rail track up to 1999 when it was classified as Crown Land. In April 2000 it was gazetted as a "Reserve for Conservation and Recreational Purposes" with a Committee of Management appointed by the Minister of what is now the Department of Environment, Land, Water and Planning to manage the rail track on behalf of the department.





Hamilton to Balkins Road Crossing

Travel along Glenelg Highway from the Visitor Information Centre, turning off at Fairburns Road and on to Balkins Road (6km).

1. Balkins Road to Chadderton Road and the Glenelg Highway

Track passes along paddocks and by Red River Gums and Blackwoods.

2. Glenelg Highway to Bochara Station Ground

Take special care when crossing the highway, with more Red River Gums and wild flowers to see in spring.

3. Bochara Station Ground to Russells Road

Striped Legless Lizards occur on the Bochara Station Ground. A steep descent leads to the new boardwalk over McKinnon Creek. Beware of meat ants on the western bank.

4. Russells Road to S Reeds Road

Whilst the track surface has been improved, the old Sandy Creek bridge is unsafe and the side-path must be used (it can be impassable in winter). Large Red and Manna Gums occur, as do wild flowers in spring.

5. S Reeds Road to Wannon-Nigretta Road

Take care when moving along this narrow, winding section through Black Wattles and Red Gums.